

Library catalogue guide Basic Search

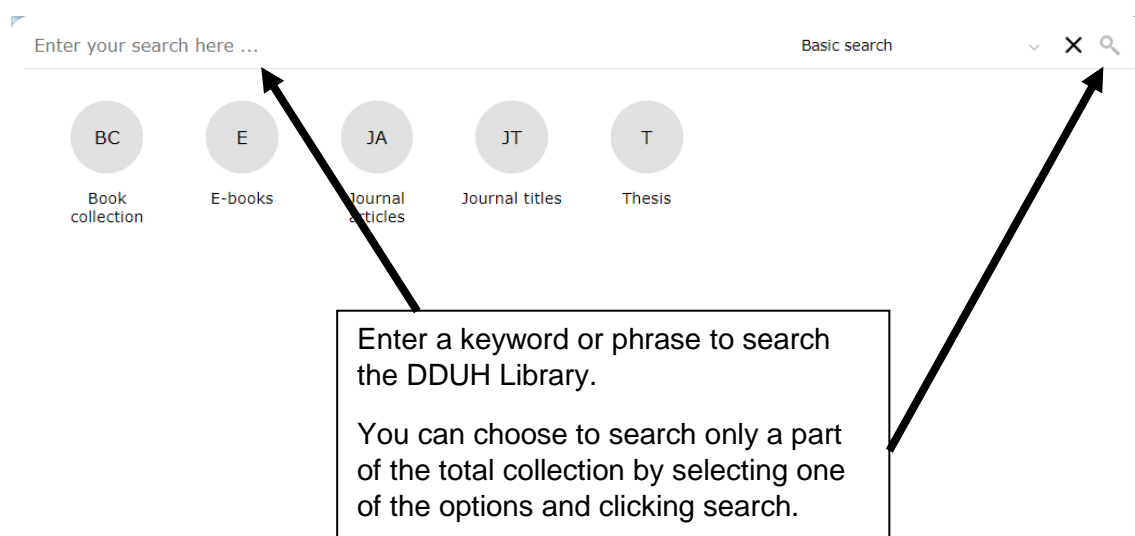
Find books, e-books, journals, e-journals, reports, audio-visual materials etc.

Access from the Library website <http://www.dentalhospital.ie/education/library/>
Logging in is not necessary for searching.

Search



Enter your search here



Quick links

Enter your search here ... Basic search

NEW BOOKS AND OTHER PUBLICATIONS

DDUH LIBRARY OPENING HOURS

Monday - Friday
9 am - 6 pm
Weekends & Bank Holidays closed

NEW DDUH RESEARCH PUBLICATIONS

DDUH LIBRARY LOGINS

DDUH Library issues two separate logins. Logins are available to DDUH staff and students only.

Athens login for accessing DDUH Library online resources
This login enables access to subscribed library resources. Search the catalogue for the resource you require and you will be prompted if the Athens login is required.

If you have an existing Athens login,
Reset your Athens login here

If you do not have a login, please e-mail library@dental.tcd.ie.

DDUH Library catalogue login for renewing and requesting hardcopy resources

QUICK LINKS

- [DDUH Library How to videos](#)
Quick videos (5 mins or less) on getting the best out of our services!
- [Reading lists](#)
- [Thesis](#)
- [DDUH Library guides](#)
- [Databases and search tools](#)
- [TCD Student Printing](#)

CONTACT US!

We offer services to all DDUH staff and students. Have a question, or don't know where to start?

E-mail DDUH Library

QUICK LINKS

- [DDUH Library How to videos](#)
Quick videos (5 mins or less) on getting the best out of our services!
- [Reading lists](#)
- [DDUH Library guides](#)
- [Databases and search tools](#)
- [TCD Student Printing](#)

Quick links are provided

Reading Lists

Reading list books are available in DDUH Library. This does not include web-sites and books available at TCD libraries only.

QUICK LINKS

[DDUH Library How to videos](#)
Quick videos (5 mins or less) on getting the best out of our services!

[Reading lists](#)



Select "Reading lists" under Quick Links

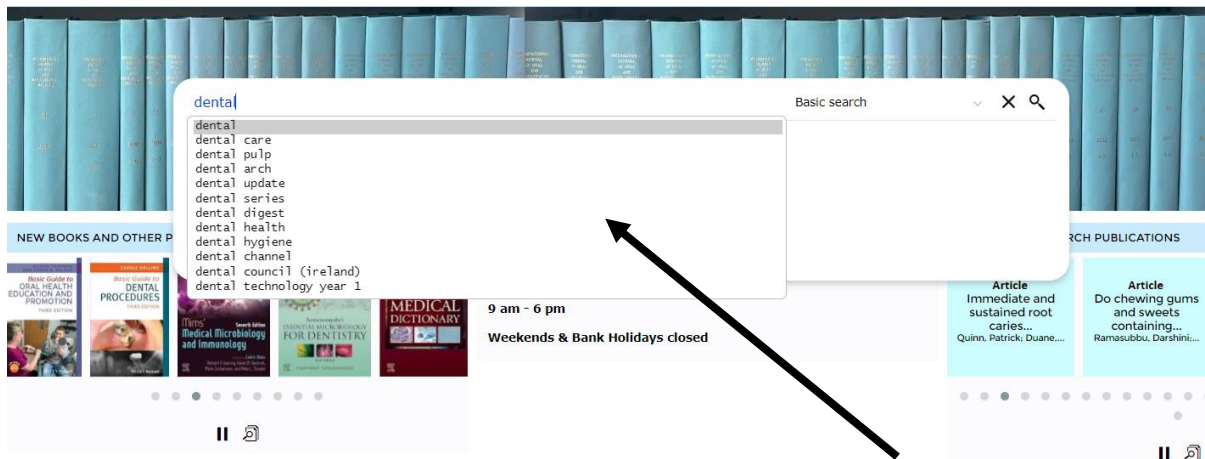
DDUH Library Guides

"Library Guides" are also available under Quick Links

The screenshot displays the DDUH Library Guides page. At the top, there is a search bar and a 'Basic search' dropdown. Below the search bar, there are navigation options: 'Refine By' (with a dropdown menu), 'Added in last: Any Time', 'Sort by: Relevance', and 'Result Layout: LIST | Tile'. The main content area is a grid of 10 library guides, each with a 'Select' button and a 'Share' icon. The guides are: E-book guide, Google Scholar guide, Cochrane Library guide, Endnote guide, Google search tips, Full-text Journal article access (updated Aug 2023), Library catalogue guide: advanced search, Library catalogue: basic search, PubMed guide, and Publishing your research: guide.

Once you have selected "Library Guides", this screen will appear, containing a collection of user guides produced by DDUH Library on e-books, Google Scholar, Cochrane Library.

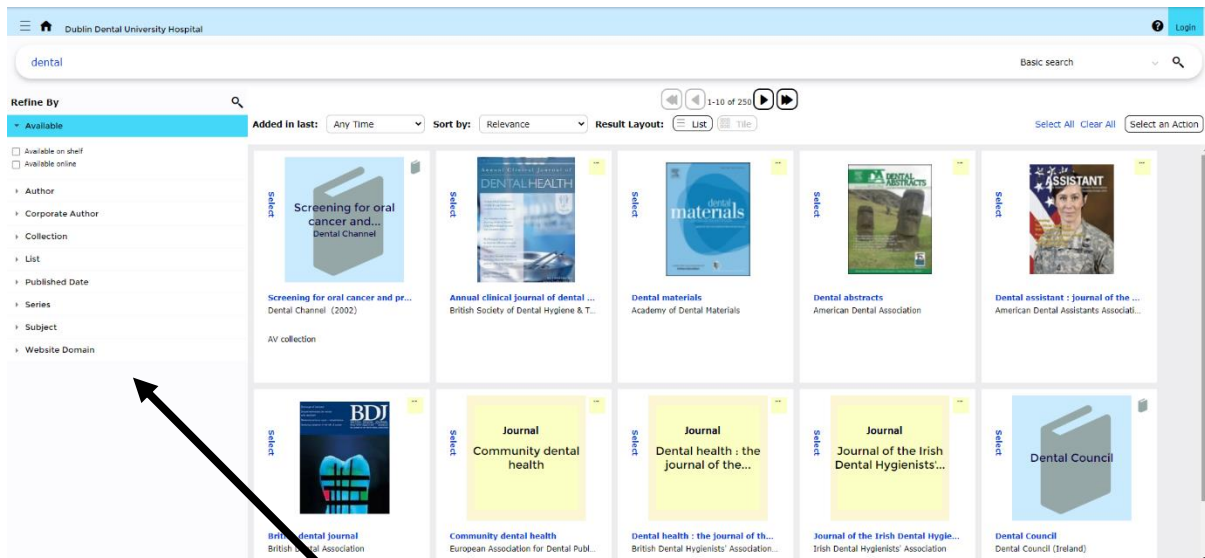
Basic Search



Predictive searching anticipates what you are searching for. If you see what you require, click on the relevant entry and the matching resources will be displayed.

When a term is highlighted you may also press Enter to search for results (such as “dental” shown in the example above).

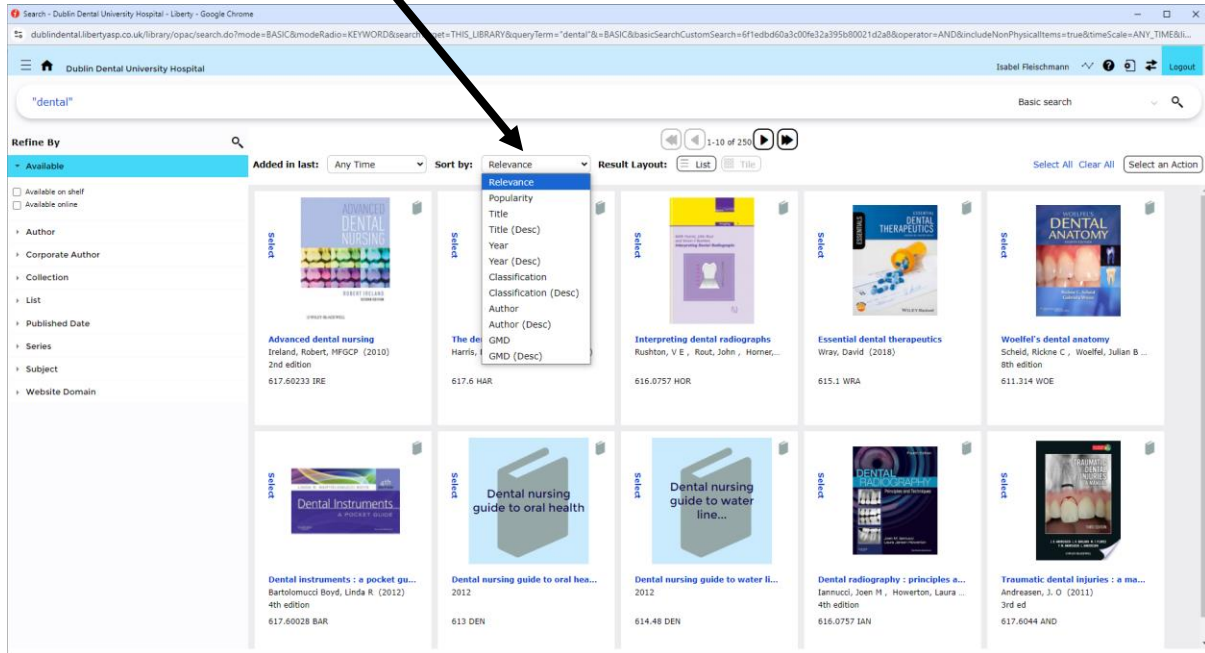
Results



You may also choose another type of search here. Available searches include:

- Authors
- Corporate authors
- Collection
- List
- Published Date
- Series
- Subject
- Website Domain

You can also sort results



If you **hover with the mouse** over the title of any resource you are interested in, links, collection, classification and availability of the resource will be displayed.

Dental instruments : a pocket guide / Bartolomucci Boyd, Linda R (2012) 4th edition ♥ More like this...

Authors: Bartolomucci Boyd, Linda R
Edition: 4th edition

Holdings:

Collection	Classification	Status	Barcode	Loan Category
Books	617.60028 BAR	Available	39011000172355	Loanable

Holdings:

Collection	Classification	Status
Books	617.60028 BAR	Available

Collection – refers to the general location of item

Classification – refers to the specific location of item

Status – refers to whether the item is available or out on loan

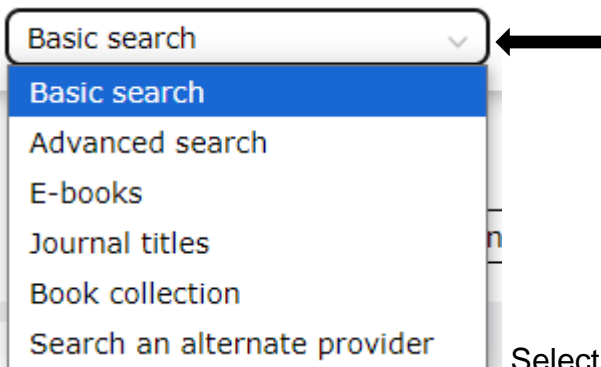
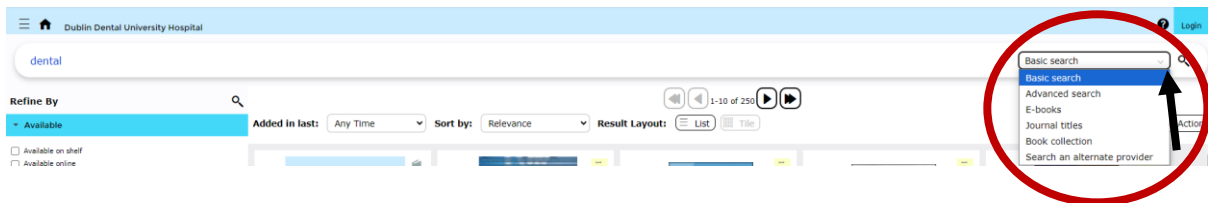
If there is an e-book or e-journal version of the resource available, an **online access link** will display at the top of the record. If you need a DDUH Athens login or TCD login you will be prompted here.

🔗 Click here to access e-book (DDUH Athens login required)

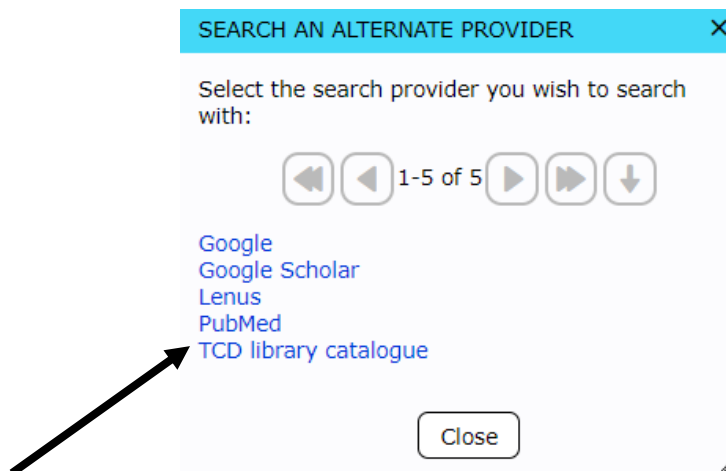
🔗 DDUH E-journal click here (1999-present; DDUH Athens login required)

Search TCD Library or another alternate provider

Click on the arrow beside Basic search for other options.



Select **Search an alternate provider**.



Choose TCD library catalogue and the search results for the same search in TCD library catalogue will open in a new window.